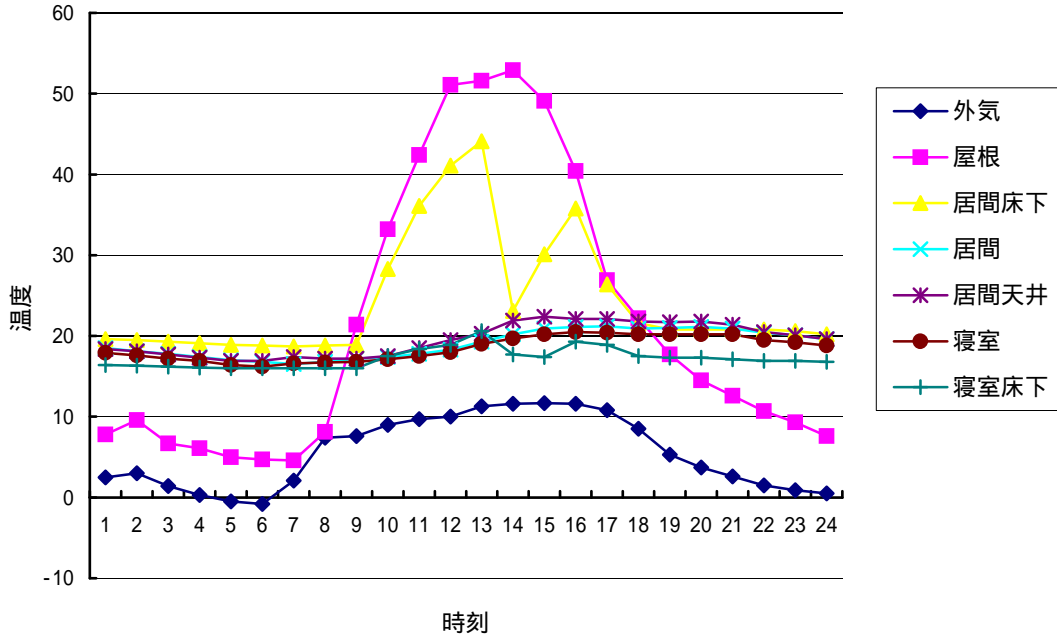


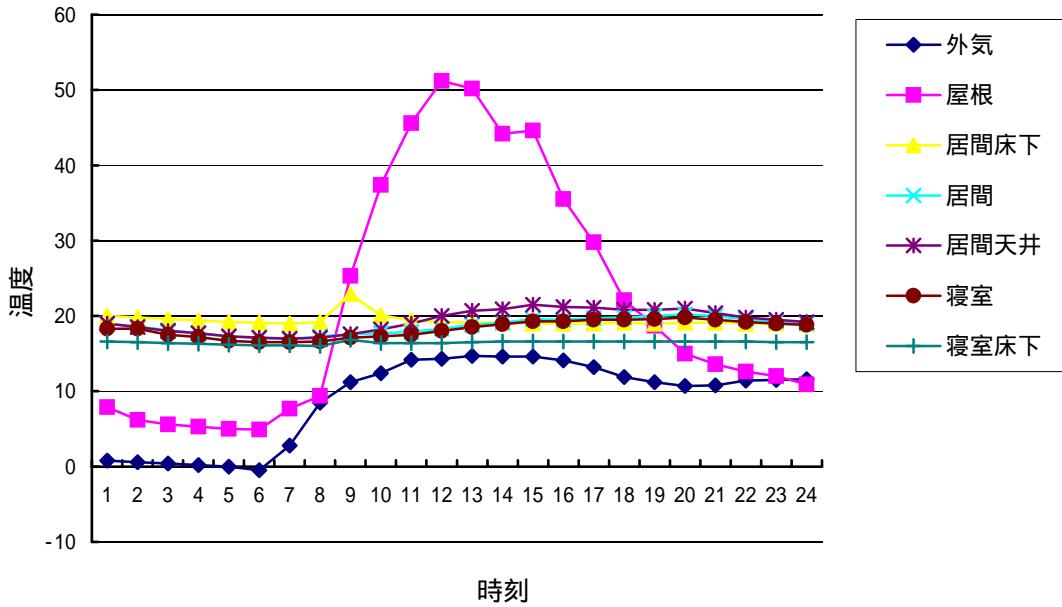
温度推移0308



時刻	温 度						
	外気	屋根	居間床下	居間	居間天井	寝室	寝室床下
1	2.5	7.8	19.6	18.5	18.4	17.9	16.4
2	3.0	9.6	19.5	18.1	18.1	17.6	16.3
3	1.4	6.7	19.3	17.8	17.7	17.2	16.2
4	0.3	6.1	19.1	17.4	17.3	16.9	16.1
5	-0.5	5.0	18.9	17.0	16.9	16.4	16.0
6	-0.8	4.7	18.8	16.8	16.9	16.2	16.0
7	2.1	4.6	18.7	16.5	17.4	16.6	16.0
8	7.4	8.1	18.8	16.8	17.2	16.7	16.0
9	7.6	21.4	18.9	17.2	17.2	16.8	16.0
10	9.0	33.2	28.3	17.4	17.5	17.1	17.5
11	9.7	42.4	36.1	17.8	18.5	17.5	18.4
12	10.0	51.1	41.1	18.3	19.5	18.0	18.9
13	11.3	51.6	44.1	19.3	20.3	19.0	20.6
14	11.6	52.9	23.1	20.2	21.9	19.7	17.7
15	11.7	49.1	30.1	20.9	22.4	20.2	17.4
16	11.6	40.4	35.8	21.1	22.1	20.5	19.3
17	10.8	26.9	26.4	21.2	22.1	20.4	18.9
18	8.5	22.2	21.6	20.9	21.8	20.2	17.5
19	5.3	17.7	20.8	21.0	21.7	20.2	17.3
20	3.7	14.5	20.8	21.1	21.8	20.2	17.3
21	2.6	12.6	20.8	20.9	21.4	20.2	17.1
22	1.5	10.7	20.8	20.4	20.5	19.5	16.9
23	0.9	9.3	20.6	20.1	20.1	19.2	16.9
24	0.5	7.6	20.2	19.6	19.6	18.8	16.8
縦計	131.7	516.2	582.2	456.3	468.3	443.0	413.5
標準偏差	4.48	17.32	7.62	1.70	2.02	1.52	1.23
測定数	24.0	24.0	24.0	24.0	24.0	24.0	24.0
全日平均	5.5	21.5	24.3	19.0	19.5	18.5	17.2
取入前平均	2.6	8.2	19.1	17.3	17.5	16.9	16.1
取入中平均	10.7	43.5	33.1	19.5	20.5	19.1	18.6
取入後平均	3.3	13.5	20.8	20.6	21.0	19.8	17.1

\* 14時は床下の温度が45 を超えないように取入を中止した。

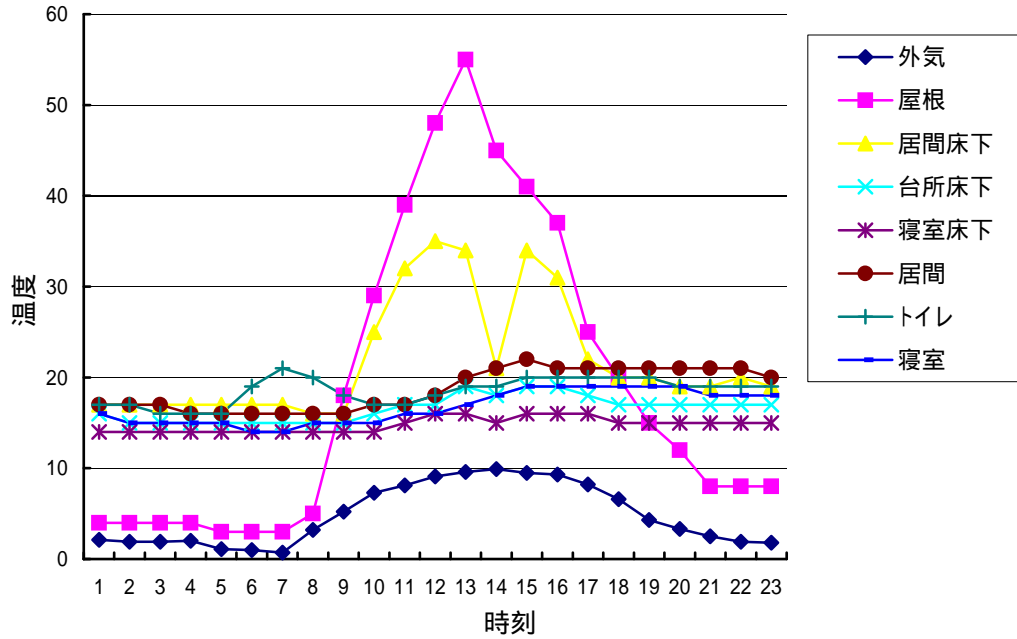
温度推移0309



時刻	温 度						
	外気	屋根	居間床下	居間	居間天井	寝室	寝室床下
1	0.8	7.9	20.0	19.0	19.0	18.3	16.6
2	0.6	6.2	19.8	18.6	18.5	18.3	16.5
3	0.4	5.6	19.6	18.1	18.0	17.5	16.4
4	0.2	5.3	19.4	17.7	17.7	17.2	16.3
5	0.0	5.0	19.2	17.3	17.3	16.7	16.2
6	-0.5	4.9	19.1	17.1	17.1	16.5	16.1
7	2.8	7.7	19.0	16.9	17.0	16.5	16.1
8	8.5	9.4	19.2	17.3	17.1	16.6	16.0
9	11.2	25.3	22.9	17.6	17.6	17.1	16.8
10	12.4	37.4	20.1	17.7	18.2	17.3	16.4
11	14.2	45.6	19.4	17.9	19.0	17.5	16.4
12	14.3	51.2	19.2	18.3	20.0	18.0	16.4
13	14.7	50.2	19.1	18.8	20.7	18.5	16.5
14	14.6	44.2	19.1	19.1	20.9	18.9	16.6
15	14.6	44.6	19.0	19.6	21.5	19.3	16.6
16	14.1	35.5	19.0	19.5	21.2	19.3	16.6
17	13.2	29.8	19.0	19.7	21.1	19.5	16.6
18	11.9	22.1	19.1	19.8	20.8	19.5	16.6
19	11.2	18.7	19.0	20.0	20.8	19.6	16.6
20	10.7	15.0	19.1	20.2	21.0	19.8	16.6
21	10.8	13.6	19.1	20.0	20.4	19.5	16.6
22	11.4	12.6	19.0	19.6	19.8	19.2	16.6
23	11.5	12.0	19.0	19.3	19.5	19.0	16.5
24	11.6	10.9	18.9	19.0	19.2	18.8	16.5
縦計	215.2	520.7	465.3	448.1	463.4	438.4	395.1
標準偏差	5.70	16.26	0.82	1.04	1.53	1.13	0.20
測定数	24.0	24.0	24.0	24.0	24.0	24.0	24.0
全日平均	9.0	21.7	19.4	18.7	19.3	18.3	16.5
取入前平均	1.6	6.5	19.4	17.8	17.7	17.2	16.3
取入中平均	11.2	25.3	22.9	17.6	17.6	17.1	16.8
取入後平均	12.7	29.6	19.1	19.2	20.3	18.9	16.5

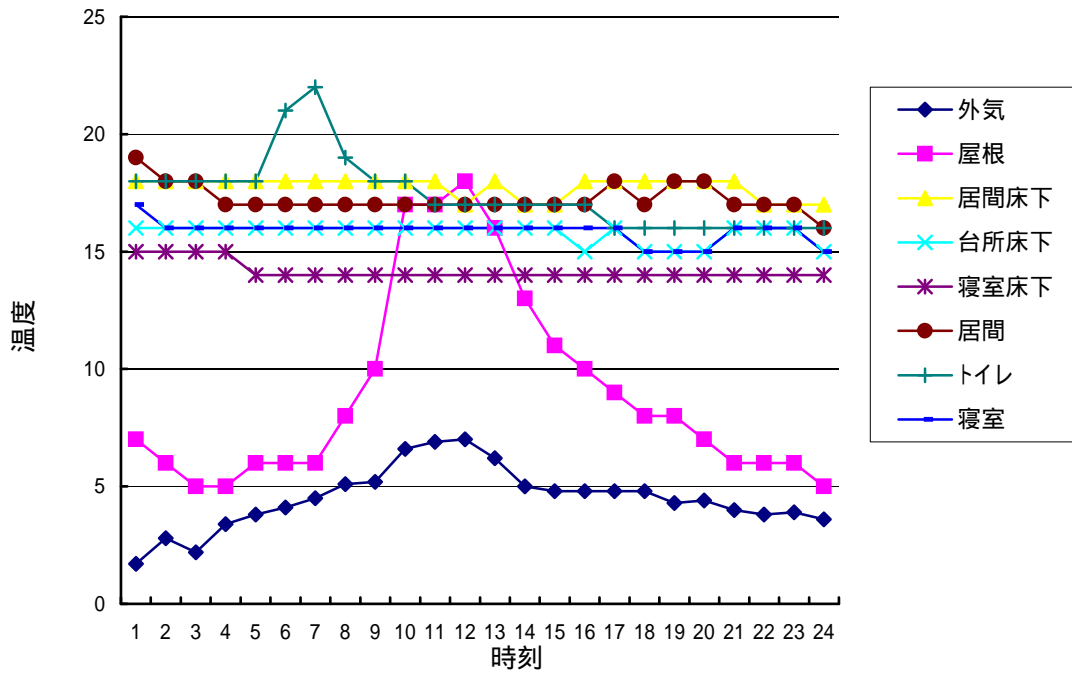
\* 外出の為、9時～10時の1時間のみ取入をし、し10時以降は排気とした。

温度推移0211



	時刻	温 度							
		外気	屋根	居間床下	台所床下	寝室床下	居間	トイレ	寝室
2月11日	1	2.1	4.0	17.0	16.0	14.0	17.0	17.0	16.0
	2	1.9	4.0	17.0	15.0	14.0	17.0	17.0	15.0
	3	1.9	4.0	17.0	15.0	14.0	17.0	16.0	15.0
	4	2.0	4.0	17.0	15.0	14.0	16.0	16.0	15.0
	5	1.1	3.0	17.0	15.0	14.0	16.0	16.0	15.0
	6	1.0	3.0	17.0	15.0	14.0	16.0	19.0	14.0
	7	0.7	3.0	17.0	15.0	14.0	16.0	21.0	14.0
	8	3.2	5.0	16.0	15.0	14.0	16.0	20.0	15.0
	9	5.2	18.0	16.0	15.0	14.0	16.0	18.0	15.0
	10	7.3	29.0	25.0	16.0	14.0	17.0	17.0	15.0
	11	8.1	39.0	32.0	17.0	15.0	17.0	17.0	16.0
	12	9.1	48.0	35.0	17.0	16.0	18.0	18.0	16.0
	13	9.6	55.0	34.0	19.0	16.0	20.0	19.0	17.0
	14	9.9	45.0	21.0	18.0	15.0	21.0	19.0	18.0
	15	9.5	41.0	34.0	19.0	16.0	22.0	20.0	19.0
	16	9.3	37.0	31.0	19.0	16.0	21.0	20.0	19.0
	17	8.2	25.0	22.0	18.0	16.0	21.0	20.0	19.0
	18	6.6	20.0	20.0	17.0	15.0	21.0	20.0	19.0
	19	4.3	15.0	20.0	17.0	15.0	21.0	20.0	19.0
	20	3.3	12.0	19.0	17.0	15.0	21.0	19.0	19.0
	21	2.5	8.0	19.0	17.0	15.0	21.0	19.0	18.0
	22	1.9	8.0	20.0	17.0	15.0	21.0	19.0	18.0
	23	1.8	8.0	19.0	17.0	15.0	20.0	19.0	18.0
	24	1.6	8.0	19.0	16.0	15.0	19.0	19.0	18.0
計		112.1	446.0	521.0	397.0	355.0	448.0	445.0	402.0
標準偏差		3.34	16.90	6.40	1.38	0.78	2.24	1.47	1.82
測定数		24.0	24.0	24.0	24.0	24.0	24.0	24.0	24.0
全日平均		4.7	18.6	21.7	16.5	14.8	18.7	18.5	16.8
取入前平均		1.7	3.8	16.9	15.1	14.0	16.4	17.8	14.9
取入中平均		8.5	39.0	28.5	17.5	15.3	19.0	18.5	16.9
取入後平均		3.8	13.0	19.8	17.0	15.1	20.6	19.4	18.5

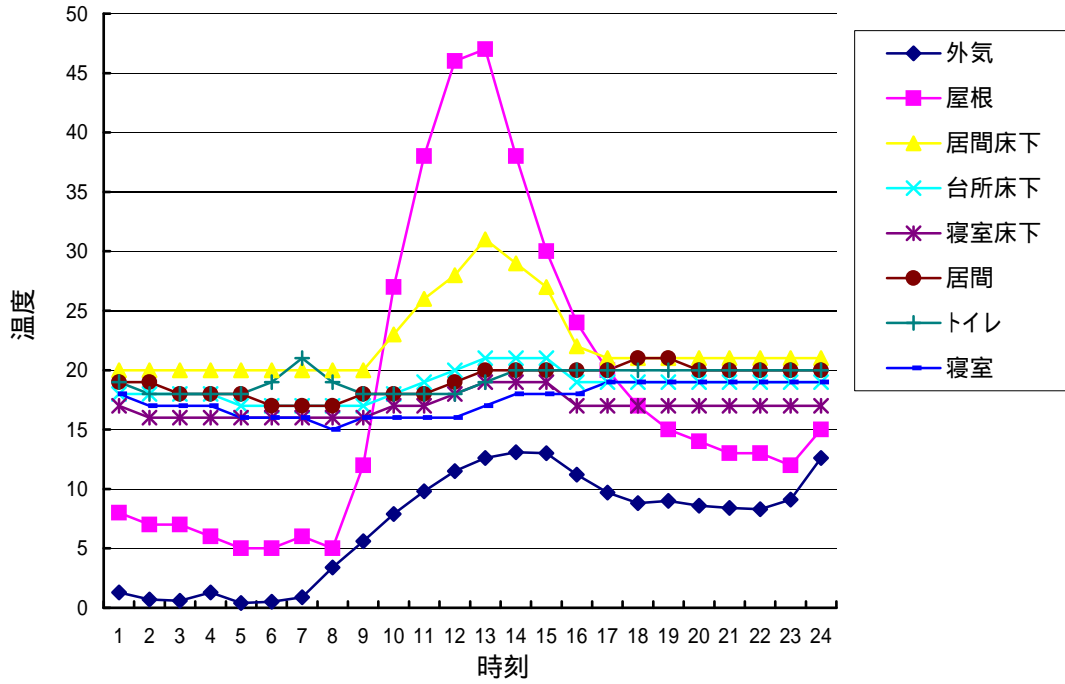
温度推移0212



	時刻	温 度							
		外気	屋根	居間床下	台所床下	寝室床下	居間	トイレ	寝室
2月12日	1	1.7	7.0	18.0	16.0	15.0	19.0	18.0	17.0
	2	2.8	6.0	18.0	16.0	15.0	18.0	18.0	16.0
	3	2.2	5.0	18.0	16.0	15.0	18.0	18.0	16.0
	4	3.4	5.0	18.0	16.0	15.0	17.0	18.0	16.0
	5	3.8	6.0	18.0	16.0	14.0	17.0	18.0	16.0
	6	4.1	6.0	18.0	16.0	14.0	17.0	21.0	16.0
	7	4.5	6.0	18.0	16.0	14.0	17.0	22.0	16.0
	8	5.1	8.0	18.0	16.0	14.0	17.0	19.0	16.0
	9	5.2	10.0	18.0	16.0	14.0	17.0	18.0	16.0
	10	6.6	17.0	18.0	16.0	14.0	17.0	18.0	16.0
	11	6.9	17.0	18.0	16.0	14.0	17.0	17.0	16.0
	12	7.0	18.0	17.0	16.0	14.0	17.0	17.0	16.0
	13	6.2	16.0	18.0	16.0	14.0	17.0	17.0	16.0
	14	5.0	13.0	17.0	16.0	14.0	17.0	17.0	16.0
	15	4.8	11.0	17.0	16.0	14.0	17.0	17.0	16.0
	16	4.8	10.0	18.0	15.0	14.0	17.0	17.0	16.0
	17	4.8	9.0	18.0	16.0	14.0	18.0	16.0	16.0
	18	4.8	8.0	18.0	15.0	14.0	17.0	16.0	15.0
	19	4.3	8.0	18.0	15.0	14.0	18.0	16.0	15.0
	20	4.4	7.0	18.0	15.0	14.0	18.0	16.0	15.0
	21	4.0	6.0	18.0	16.0	14.0	17.0	16.0	16.0
	22	3.8	6.0	17.0	16.0	14.0	17.0	16.0	16.0
	23	3.9	6.0	17.0	16.0	14.0	17.0	16.0	16.0
	24	3.6	5.0	17.0	15.0	14.0	16.0	16.0	15.0
縦計		107.7	216.0	426.0	379.0	340.0	414.0	418.0	381.0
標準偏差		1.33	4.18	0.44	0.41	0.38	0.61	1.56	0.45
測定数		24.0	24.0	24.0	24.0	24.0	24.0	24.0	24.0
全日平均		4.5	9.0	17.8	15.8	14.2	17.3	17.4	15.9
1～8平均		3.5	6.1	18.0	16.0	14.5	17.5	19.0	16.1
9～16平均		5.8	14.0	17.6	15.9	14.0	17.0	17.3	16.0
17～24平均		4.2	6.9	17.6	15.5	14.0	17.3	16.0	15.5

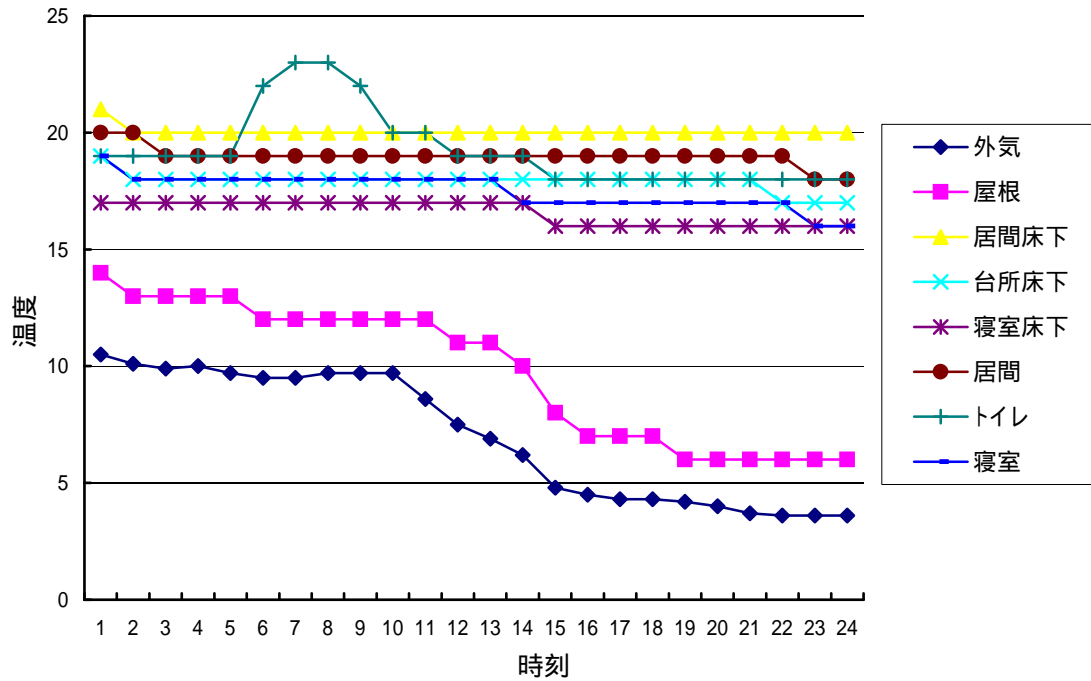
\* 屋根温度が23 を超えないので蓄熱できず。

温度推移0111



時刻	温 度							
	外気	屋根	居間床下	台所床下	寝室床下	居間	トイレ	寝室
1	1.3	8.0	20.0	18.0	17.0	19.0	19.0	18.0
2	0.7	7.0	20.0	18.0	16.0	19.0	18.0	17.0
3	0.6	7.0	20.0	18.0	16.0	18.0	18.0	17.0
4	1.3	6.0	20.0	18.0	16.0	18.0	18.0	17.0
5	0.4	5.0	20.0	17.0	16.0	18.0	18.0	16.0
6	0.5	5.0	20.0	17.0	16.0	17.0	19.0	16.0
7	0.9	6.0	20.0	17.0	16.0	17.0	21.0	16.0
8	3.4	5.0	20.0	17.0	16.0	17.0	19.0	15.0
9	5.6	12.0	20.0	17.0	16.0	18.0	18.0	16.0
10	7.9	27.0	23.0	18.0	17.0	18.0	18.0	16.0
11	9.8	38.0	26.0	19.0	17.0	18.0	18.0	16.0
12	11.5	46.0	28.0	20.0	18.0	19.0	18.0	16.0
13	12.6	47.0	31.0	21.0	19.0	20.0	19.0	17.0
14	13.1	38.0	29.0	21.0	19.0	20.0	20.0	18.0
15	13.0	30.0	27.0	21.0	19.0	20.0	20.0	18.0
16	11.2	24.0	22.0	19.0	17.0	20.0	20.0	18.0
17	9.7	20.0	21.0	19.0	17.0	20.0	20.0	19.0
18	8.8	17.0	21.0	19.0	17.0	21.0	20.0	19.0
19	9.0	15.0	21.0	19.0	17.0	21.0	20.0	19.0
20	8.6	14.0	21.0	19.0	17.0	20.0	20.0	19.0
21	8.4	13.0	21.0	19.0	17.0	20.0	20.0	19.0
22	8.3	13.0	21.0	19.0	17.0	20.0	20.0	19.0
23	9.1	12.0	21.0	19.0	17.0	20.0	20.0	19.0
24	12.6	15.0	21.0	19.0	17.0	20.0	20.0	19.0
縦計	168.3	430.0	534.0	448.0	407.0	458.0	461.0	419.0
標準偏差	4.62	13.16	3.30	1.24	0.95	1.25	0.98	1.35
測定数	24.0	24.0	24.0	24.0	24.0	24.0	24.0	24.0
全日平均	7.0	17.9	22.3	18.7	17.0	19.1	19.2	17.5
取入前平均	1.1	6.1	20.0	17.5	16.1	17.9	18.8	16.5
取入中平均	10.5	34.0	26.3	19.6	17.9	19.0	18.7	16.7
取入後平均	9.5	15.9	21.1	19.0	17.0	20.2	20.0	18.9

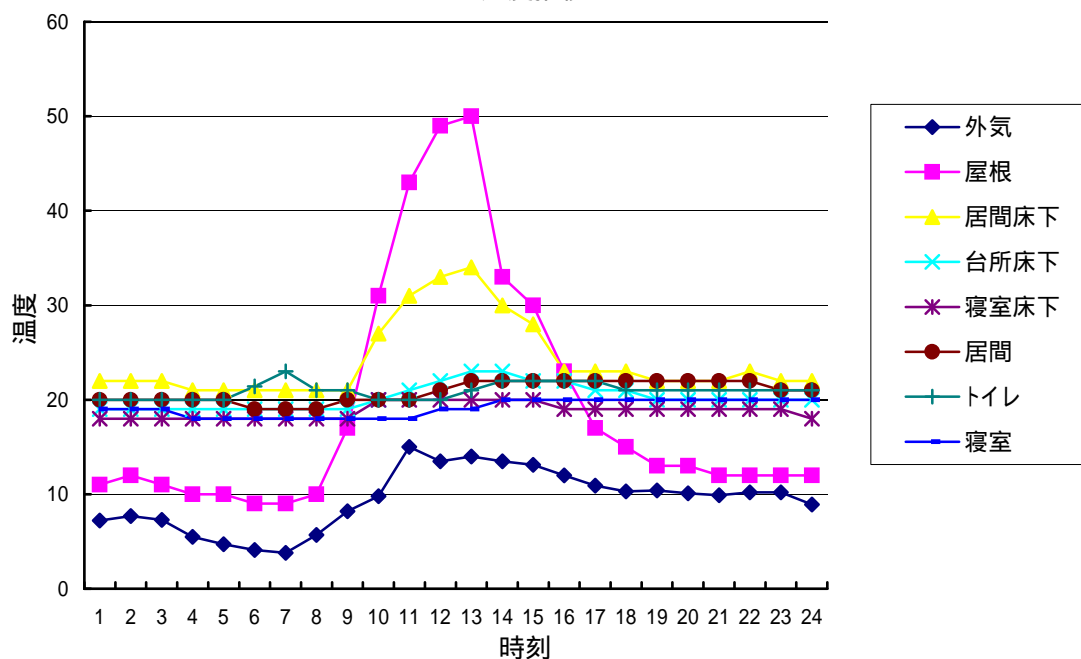
温度推移0112



時刻	温 度							
	外気	屋根	居間床下	台所床下	寝室床下	居間	トイレ	寝室
1	10.5	14.0	21.0	19.0	17.0	20.0	19.0	19.0
2	10.1	13.0	20.0	18.0	17.0	20.0	19.0	18.0
3	9.9	13.0	20.0	18.0	17.0	19.0	19.0	18.0
4	10.0	13.0	20.0	18.0	17.0	19.0	19.0	18.0
5	9.7	13.0	20.0	18.0	17.0	19.0	19.0	18.0
6	9.5	12.0	20.0	18.0	17.0	19.0	22.0	18.0
7	9.5	12.0	20.0	18.0	17.0	19.0	23.0	18.0
8	9.7	12.0	20.0	18.0	17.0	19.0	23.0	18.0
9	9.7	12.0	20.0	18.0	17.0	19.0	22.0	18.0
10	9.7	12.0	20.0	18.0	17.0	19.0	20.0	18.0
11	8.6	12.0	20.0	18.0	17.0	19.0	20.0	18.0
12	7.5	11.0	20.0	18.0	17.0	19.0	19.0	18.0
13	6.9	11.0	20.0	18.0	17.0	19.0	19.0	18.0
14	6.2	10.0	20.0	18.0	17.0	19.0	19.0	17.0
15	4.8	8.0	20.0	18.0	16.0	19.0	18.0	17.0
16	4.5	7.0	20.0	18.0	16.0	19.0	18.0	17.0
17	4.3	7.0	20.0	18.0	16.0	19.0	18.0	17.0
18	4.3	7.0	20.0	18.0	16.0	19.0	18.0	17.0
19	4.2	6.0	20.0	18.0	16.0	19.0	18.0	17.0
20	4.0	6.0	20.0	18.0	16.0	19.0	18.0	17.0
21	3.7	6.0	20.0	18.0	16.0	19.0	18.0	17.0
22	3.6	6.0	20.0	17.0	16.0	19.0	18.0	17.0
23	3.6	6.0	20.0	17.0	16.0	18.0	18.0	16.0
24	3.6	6.0	20.0	17.0	16.0	18.0	18.0	16.0
縦計		168.1	235.0	481.0	430.0	398.0	456.0	420.0
標準偏差		2.74	2.98	0.20	0.41	0.50	0.42	0.72
測定数		24.0	24.0	24.0	24.0	24.0	24.0	24.0
全日平均		7.0	9.8	20.0	17.9	16.6	19.0	17.5
1 ~ 8 平均		9.9	12.8	20.1	18.1	17.0	19.3	18.1
9 ~ 16 平均		7.2	10.4	20.0	18.0	16.8	19.0	17.6
17 ~ 24 平均		3.9	6.3	20.0	17.6	16.0	18.8	16.8

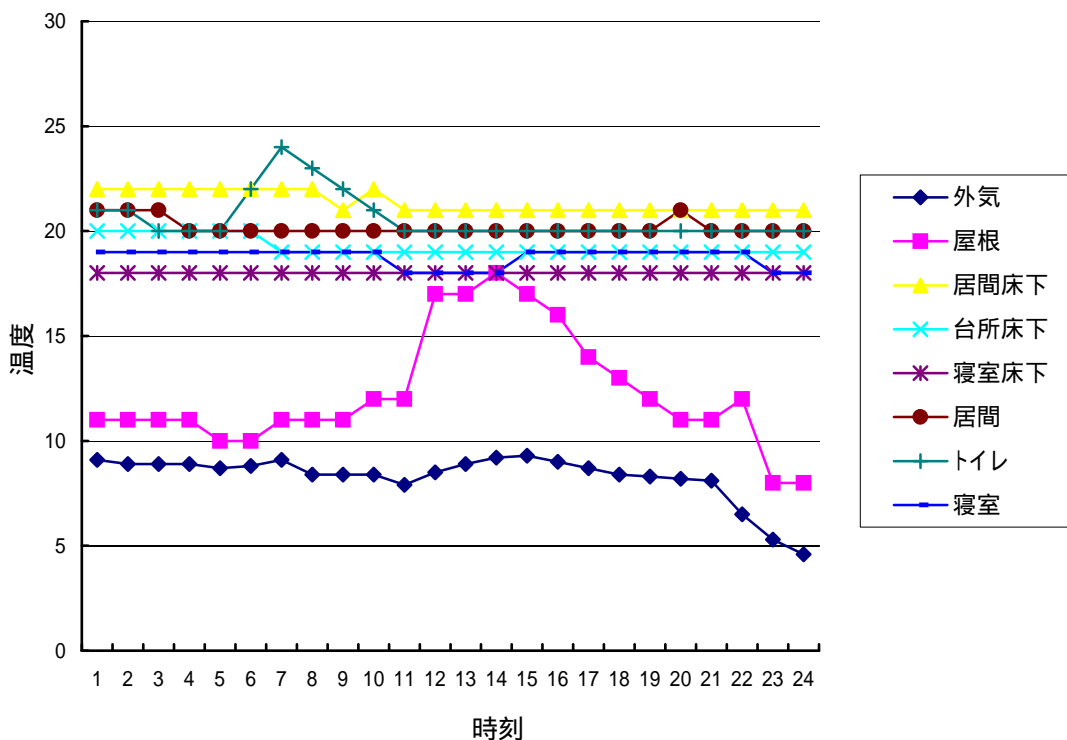
\* 屋根温度が23 を超えないので蓄熱できず。

温度推移1212



時刻	温 度							
	外気	屋根	居間床下	台所床下	寝室床下	居間	トイレ	寝室
1	7.2	11.0	22.0	19.0	18.0	20.0	20.0	19.0
2	7.7	12.0	22.0	19.0	18.0	20.0	20.0	19.0
3	7.3	11.0	22.0	19.0	18.0	20.0	20.0	19.0
4	5.5	10.0	21.0	19.0	18.0	20.0	20.0	18.0
5	4.7	10.0	21.0	19.0	18.0	20.0	20.0	18.0
6	4.1	9.0	21.0	19.0	18.0	19.0	21.4	18.0
7	3.8	9.0	21.0	19.0	18.0	19.0	23.0	18.0
8	5.7	10.0	21.0	19.0	18.0	19.0	21.0	18.0
9	8.2	17.0	21.0	19.0	18.0	20.0	21.0	18.0
10	9.8	31.0	27.0	20.0	20.0	20.0	20.0	18.0
11	15.0	43.0	31.0	21.0	20.0	20.0	20.0	18.0
12	13.5	49.0	33.0	22.0	20.0	21.0	20.0	19.0
13	14.0	50.0	34.0	23.0	20.0	22.0	21.0	19.0
14	13.5	33.0	30.0	23.0	20.0	22.0	22.0	20.0
15	13.1	30.0	28.0	22.0	20.0	22.0	22.0	20.0
16	12.0	23.0	23.0	22.0	19.0	22.0	22.0	20.0
17	10.9	17.0	23.0	21.0	19.0	22.0	22.0	20.0
18	10.3	15.0	23.0	21.0	19.0	22.0	21.0	20.0
19	10.4	13.0	22.0	20.0	19.0	22.0	21.0	20.0
20	10.1	13.0	22.0	20.0	19.0	22.0	21.0	20.0
21	9.9	12.0	22.0	20.0	19.0	22.0	21.0	20.0
22	10.2	12.0	23.0	20.0	19.0	22.0	21.0	20.0
23	10.2	12.0	22.0	20.0	19.0	21.0	21.0	20.0
24	8.9	12.0	22.0	20.0	18.0	21.0	21.0	20.0
縦計	226.0	464.0	577.0	486.0	452.0	500.0	502.4	459.0
標準偏差	3.21	12.89	4.07	1.33	0.82	1.13	0.84	0.90
測定数	24.0	24.0	24.0	24.0	24.0	24.0	24.0	24.0
全日平均	9.4	19.3	24.0	20.3	18.8	20.8	20.9	19.1
取入前平均	5.8	10.3	21.4	19.0	18.0	19.6	20.7	18.4
取入中平均	12.4	36.1	29.1	21.4	19.7	21.0	20.9	18.9
取入後平均	10.3	14.3	22.4	20.4	18.9	21.8	21.2	20.0

温度推移1213



時刻	温 度							
	外気	屋根	居間床下	台所床下	寝室床下	居間	トイレ	寝室
1	9.1	11.0	22.0	20.0	18.0	21.0	21.0	19.0
2	8.9	11.0	22.0	20.0	18.0	21.0	21.0	19.0
3	8.9	11.0	22.0	20.0	18.0	21.0	20.0	19.0
4	8.9	11.0	22.0	20.0	18.0	20.0	20.0	19.0
5	8.7	10.0	22.0	20.0	18.0	20.0	20.0	19.0
6	8.8	10.0	22.0	20.0	18.0	20.0	22.0	19.0
7	9.1	11.0	22.0	19.0	18.0	20.0	24.0	19.0
8	8.4	11.0	22.0	19.0	18.0	20.0	23.0	19.0
9	8.4	11.0	21.0	19.0	18.0	20.0	22.0	19.0
10	8.4	12.0	22.0	19.0	18.0	20.0	21.0	19.0
11	7.9	12.0	21.0	19.0	18.0	20.0	20.0	18.0
12	8.5	17.0	21.0	19.0	18.0	20.0	20.0	18.0
13	8.9	17.0	21.0	19.0	18.0	20.0	20.0	18.0
14	9.2	18.0	21.0	19.0	18.0	20.0	20.0	18.0
15	9.3	17.0	21.0	19.0	18.0	20.0	20.0	19.0
16	9.0	16.0	21.0	19.0	18.0	20.0	20.0	19.0
17	8.7	14.0	21.0	19.0	18.0	20.0	20.0	19.0
18	8.4	13.0	21.0	19.0	18.0	20.0	20.0	19.0
19	8.3	12.0	21.0	19.0	18.0	20.0	20.0	19.0
20	8.2	11.0	21.0	19.0	18.0	21.0	20.0	19.0
21	8.1	11.0	21.0	19.0	18.0	20.0	20.0	19.0
22	6.5	12.0	21.0	19.0	18.0	20.0	20.0	19.0
23	5.3	8.0	21.0	19.0	18.0	20.0	20.0	18.0
24	4.6	8.0	21.0	19.0	18.0	20.0	20.0	18.0
縦計	198.5	295.0	513.0	462.0	432.0	484.0	494.0	450.0
標準偏差	1.18	2.79	0.49	0.44	0.00	0.38	1.10	0.44
測定数	24.0	24.0	24.0	24.0	24.0	24.0	24.0	24.0
全日平均	8.3	12.3	21.4	19.3	18.0	20.2	20.6	18.8
1～8平均	8.9	10.8	22.0	19.8	18.0	20.4	21.4	19.0
9～16平均	8.7	15.0	21.1	19.0	18.0	20.0	20.4	18.5
17～24平均	7.3	11.1	21.0	19.0	18.0	20.1	20.0	18.8

\* 屋根温度が23 を超えないので蓄熱できず。